

# ANKUR XOL 541

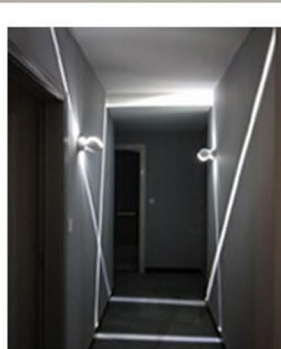
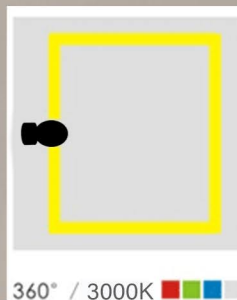
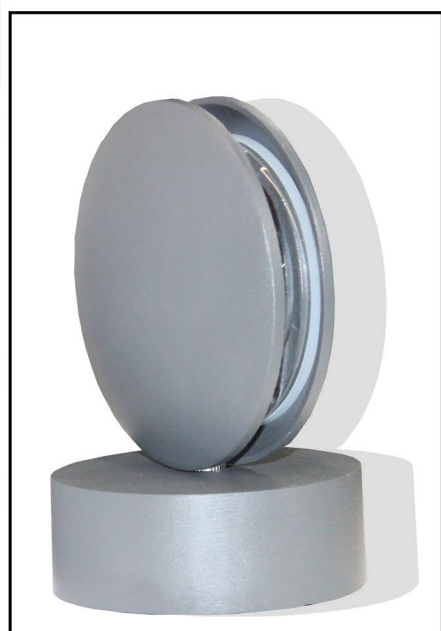
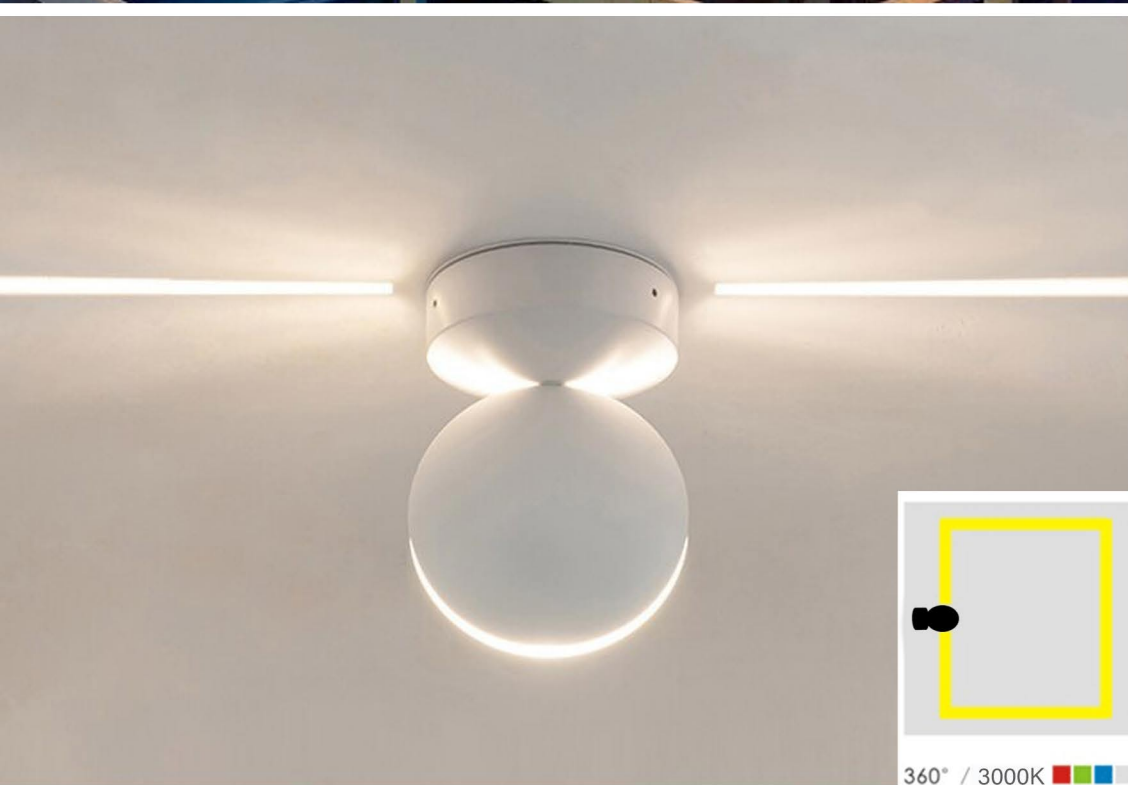
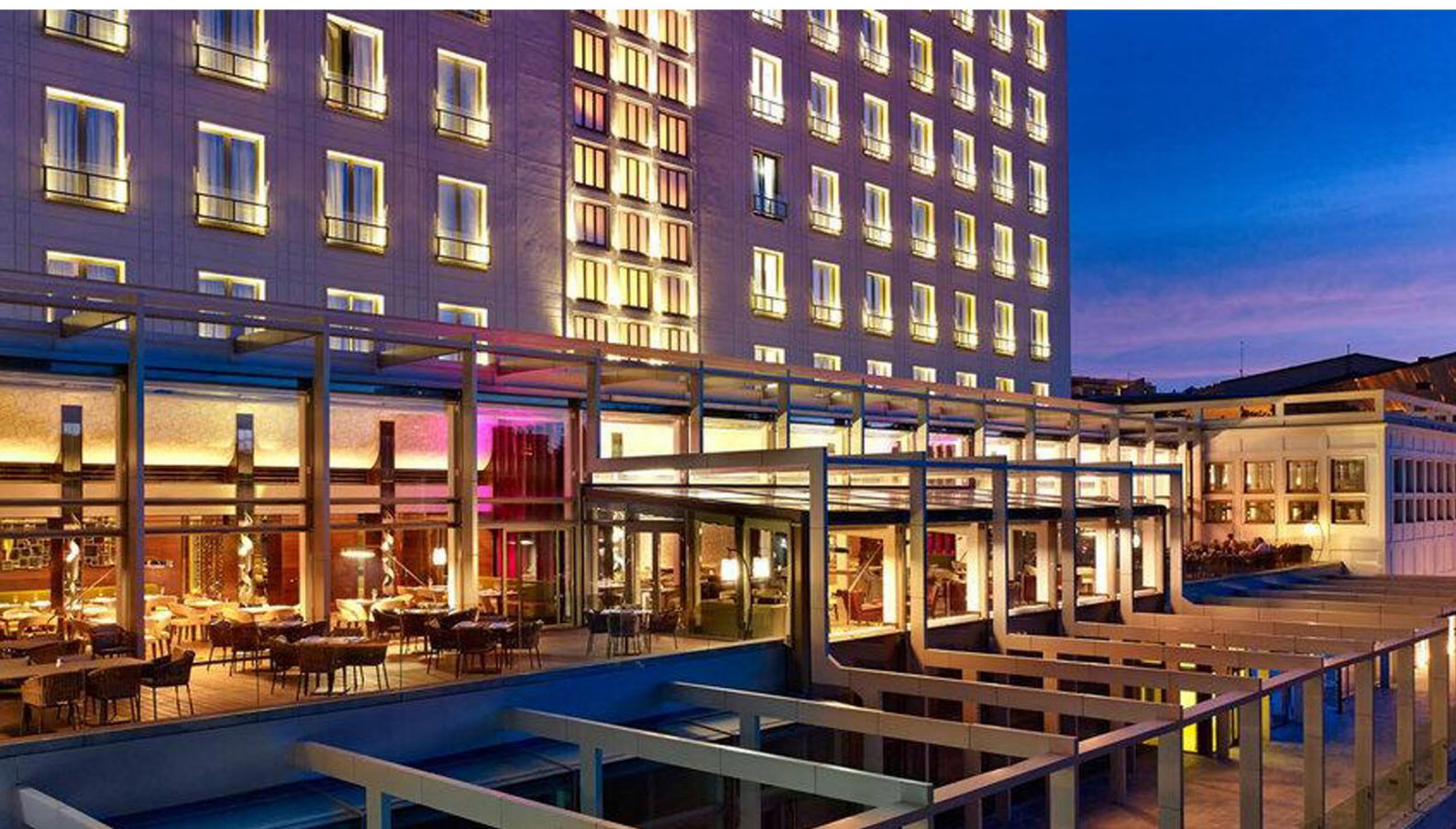


360° / 3000k



## ANKUR XOL 541

Ideal lighting supply to help you achieve the latest graphic lighting. It is the new decorative lighting trend that will create a 3D light-blade like effect, the light will adopt to the frame shape of applied location perfectly, emphasizes each curve and angle, vector surfaces and highlight the texture to the application areas, no dead spot left.

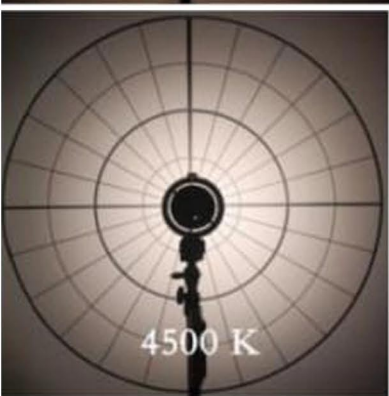
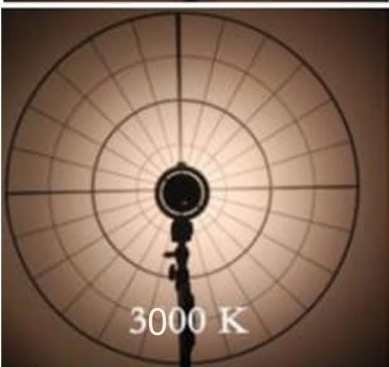
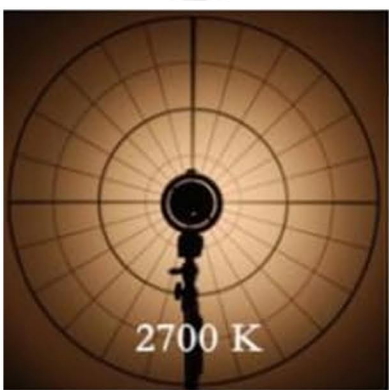
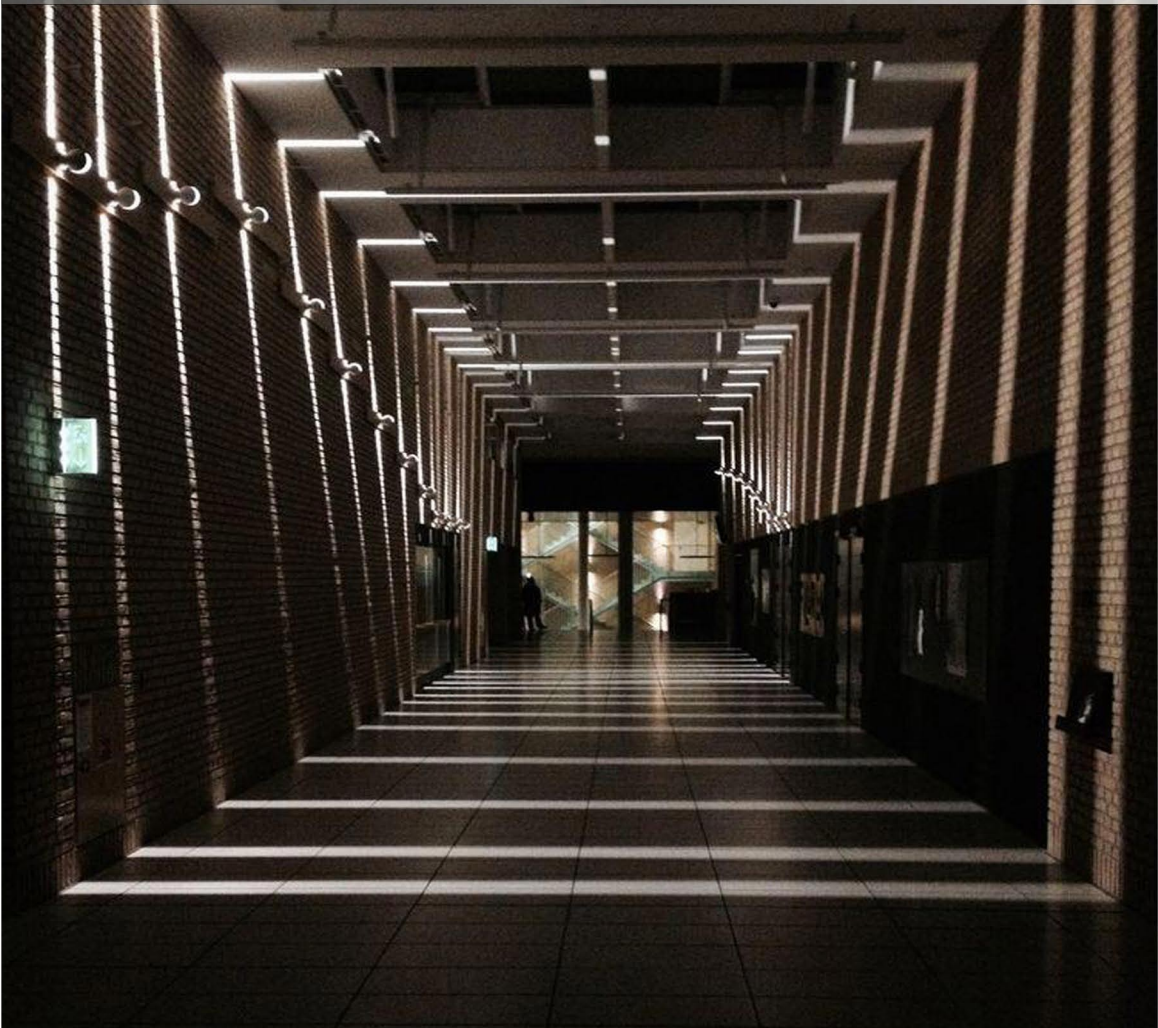


It is widely used in indoor / outdoor building, for Wall / Passage / stage / Gallery / Parking Lot / Campus decoration.

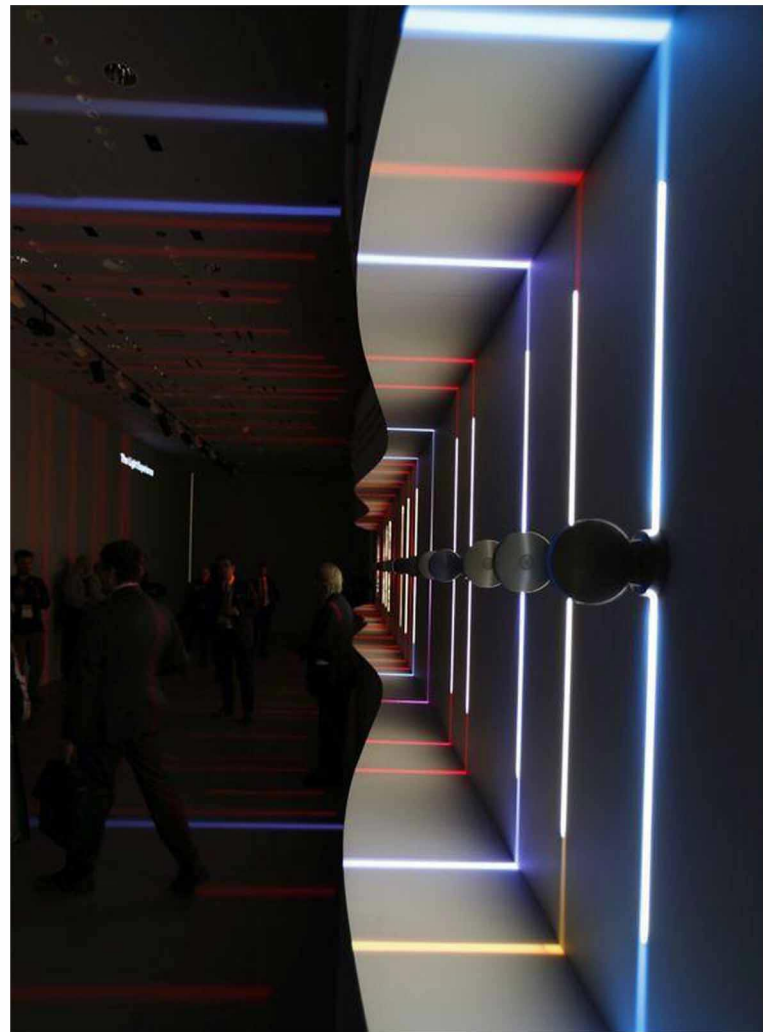




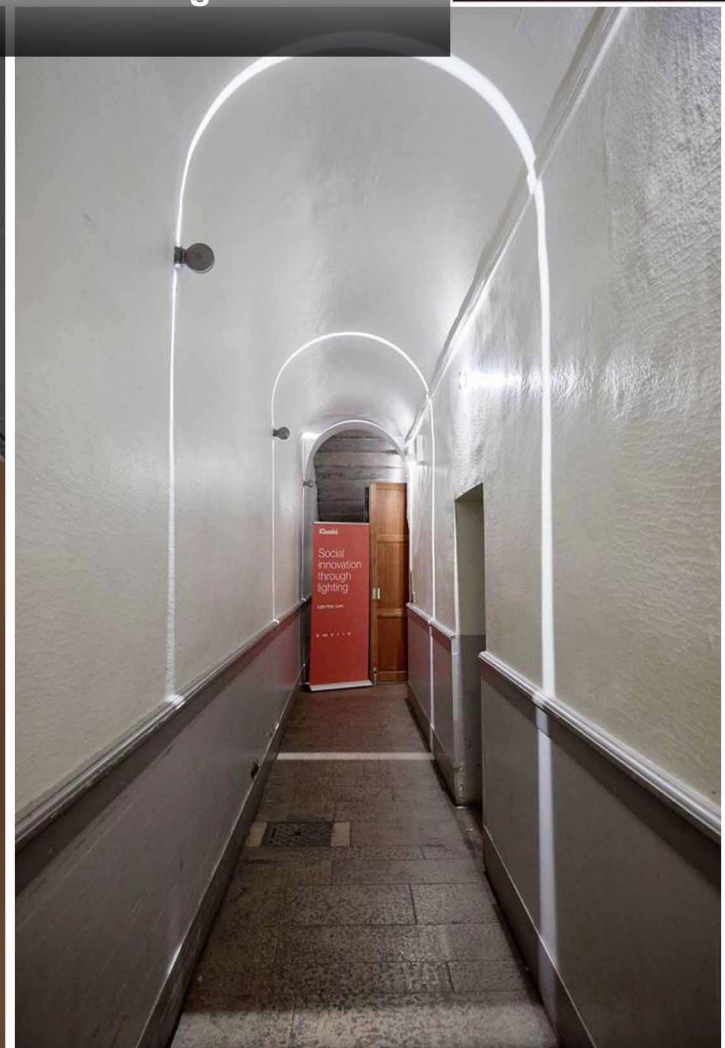
It is mainly used to highlight buildings on window sills and glass curtain walls, also can be used in tunnels, Culverts or door openings to highlight its outline.







In addition, it can be used in interior corridors to highlight their new visual effects. Each light can be designed so that single colour can create different effects.







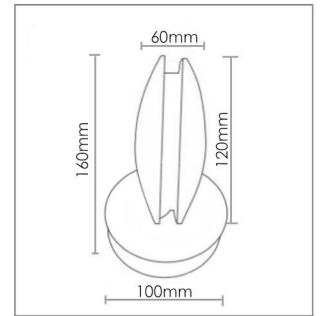
LED Trick light is a new type of optical design for decorative blade light effect lighting. it has various advantages like, High brightness, Waterproof , Easy to install, Environment friendly. Lighting effects makes the building more luxurious.



## ANKUR XOL 541



Material : Aluminium Die- Cast  
Finish : Pearl White / Grey / Black  
Power Watt : 9W  
Input Voltage : 230V-240V-50Hz  
Light Source : 1x 9W LED  
Lumens Flux : 612 lm  
CCT : 3000K  
IP Rating : IP65  
CRI 80/90  
Size: W:60mm  
D:120mm  
H:168mm



Available color:

WH BK SL

