

EURO

BLACKHOLE



ANTI-
GLARE



OPTIONAL
DIMMING
ON REQUEST

ANKUR EURO BLACKHOLE TRIMLESS DOT PINSPOT LED DOWNLIGHT

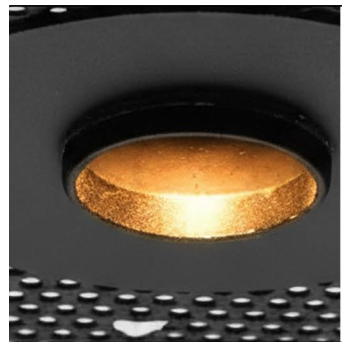
The ANKUR EURO BLACKHOLE is a revolution in recessed lighting, designed to deliver both exceptional performance and minimalist elegance. This trimless downlight offers a sleek, modern aesthetic where the trim disappears, thanks to the seamless integration with POP, leaving behind only a refined small DOT visible. The result? A sophisticated look that brings out the best in contemporary interiors while providing high-quality, focused illumination.



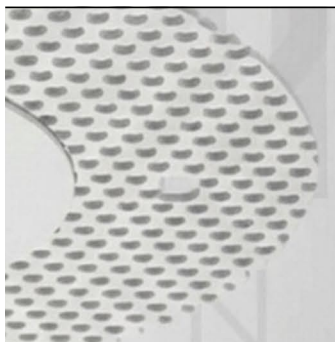


Features

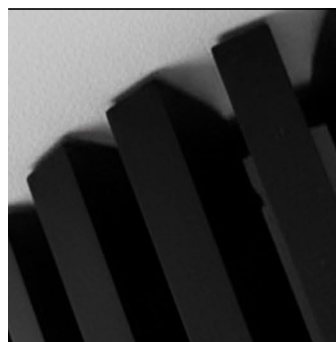
Technical Specifications



Pin Spot




Trimless



High Quality

ANKUR EURO BLACKHOLE TRIMLESS DOT PINSPOT LED DOWNLIGHT

	Wattage(W)	low
Lumen Output	3000k	85lm
	4000k	95lm
	6500k	115lm
System Efficiency	No. of LPs	1
	Dimensions (in mm)	HxDxCO 69mm X 100mm X 90mm

System Specs	CRI	IP RATING	INPUT	PF	THD	EFFICACY
	> 90	IP-20	240V/50Hz	>0.9	<10%	>90%
	Housing	Lamp Type	Driver Location	Aluminium LED COB internal wiring		
Colour Options	Housing	<input checked="" type="checkbox"/>  <input type="checkbox"/> 